



56A Mountain View Avenue, Avondale Heights



## ONE OF THE BIGGEST 2 BEDROOM + STUDY PROPERTIES...

Spread over a huge 20sq approx of stylish and opulent living is this outstanding property that is ideal for first home buyers, downsizer's and investors alike.

Located in an attractive street close to all local amenities and surrounded by quality homes, this opportunity will definitely attract the eye of many buyers alike.

This unique and hard to find property is packed with quality fixtures and fittings and crafted with a modern and contemporary theme throughout making it a standout against other homes on offer.

Comprising of 2 spacious bedrooms (BIR in both and main with own ensuite) separate study or 3rd bedroom, central main bathroom, 2 toilets, internal atrium, huge laundry, designer kitchen with quality stainless steel appliances inc dishwasher, ample family meals area combined with the huge open plan entertaining room which also leads

2 Beds 2 Baths 2 Cars

<b>Price</b>	SOLD
<b>Property Type</b>	Residential
<b>Property ID</b>	741

### Agent Details

David Gigliotti - +61411824854

### Office Details

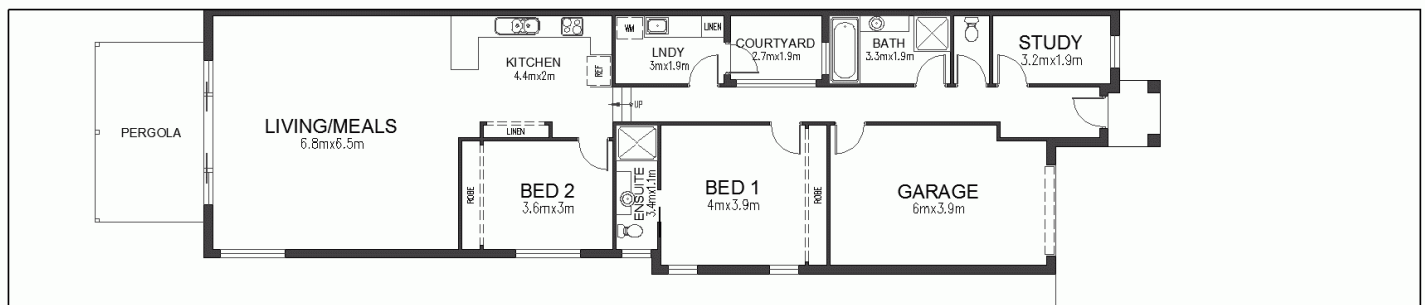
Avondale Heights  
151 Military Road Avondale  
Heights VIC 3034 Australia  
03 9337 5066

out to the roomy rear courtyard with pergola.

With lush manicured gardens front to back, single remote control garage with internal access, gas ducted heating, split system cooling, Tassie Oak hardwood floors, porcelain tiles, Roman blinds, Bosch alarm system and more, one look is all it will take!

David Gigliotti - 0411 824 854

The above information provided has been furnished to us by the vendor/s. We have not verified whether or not that information is accurate and do not have any belief in one way or the other in its accuracy. We do not accept any responsibility to any person for its accuracy and do no more than pass it on. All interested parties should make and rely upon their own inquiries in order to determine whether or not this information is in fact accurate.



**56a MOUNTAIN VIEW AVENUE, AVONDALE HEIGHTS, 3034**

