

Sold

1, 33 Wingara Avenue, Keilor East



LOW MAINTENANCE LIVING IN BLUE CHIP LOCALE!

In the heart of Keilor East offering immediate access to Centreway Shopping Precinct & the area's key amenities, this charming weatherboard home provides an environment of easy-living excellence thanks to its generous floorplan, immaculate surrounds and own street frontage with no shared land.

An ideal choice for first-time buyers, investors and downsizers alike, the home's pristine interior comprises an open entrance accessing two bedrooms (both with mirrored BIRs) complemented by an updated central and fully tiled bathroom.

Add to this a picturesque light-filled front lounge and updated kitchen with breakfast bench, dishwasher and ample cupboard space that flows into the good sized meals area.

Other highlights include ducted heating and split-system air conditioning, full-size internal laundry and lovely front yard to enjoy.

Completing the picture via double french doors is a large outdoor undercover deck and private rear courtyard, perfect for year round entertaining and additional driveway parking.

Walking distance to the best of Keilor East including popular cafes, transport and vibrant shopping centre, it's also close to primary and secondary schools and easy access to the Calder Freeway.

DAVID GIGLIOTTI - 0411 824 854

The above information provided has been furnished to us by the vendor/s. We have not verified whether or not that information is accurate and do not have any belief in one way or the other in its accuracy. We do not accept any responsibility to any person for its accuracy and do no more than pass it on. All interested parties should make and rely upon their own inquiries in order to determine whether or not this information is in fact accurate.

2 Beds 1 Baths 2 Cars
355 m2

Price

SOLD for
\$725,000

Property Type

Residential

Property ID 2618

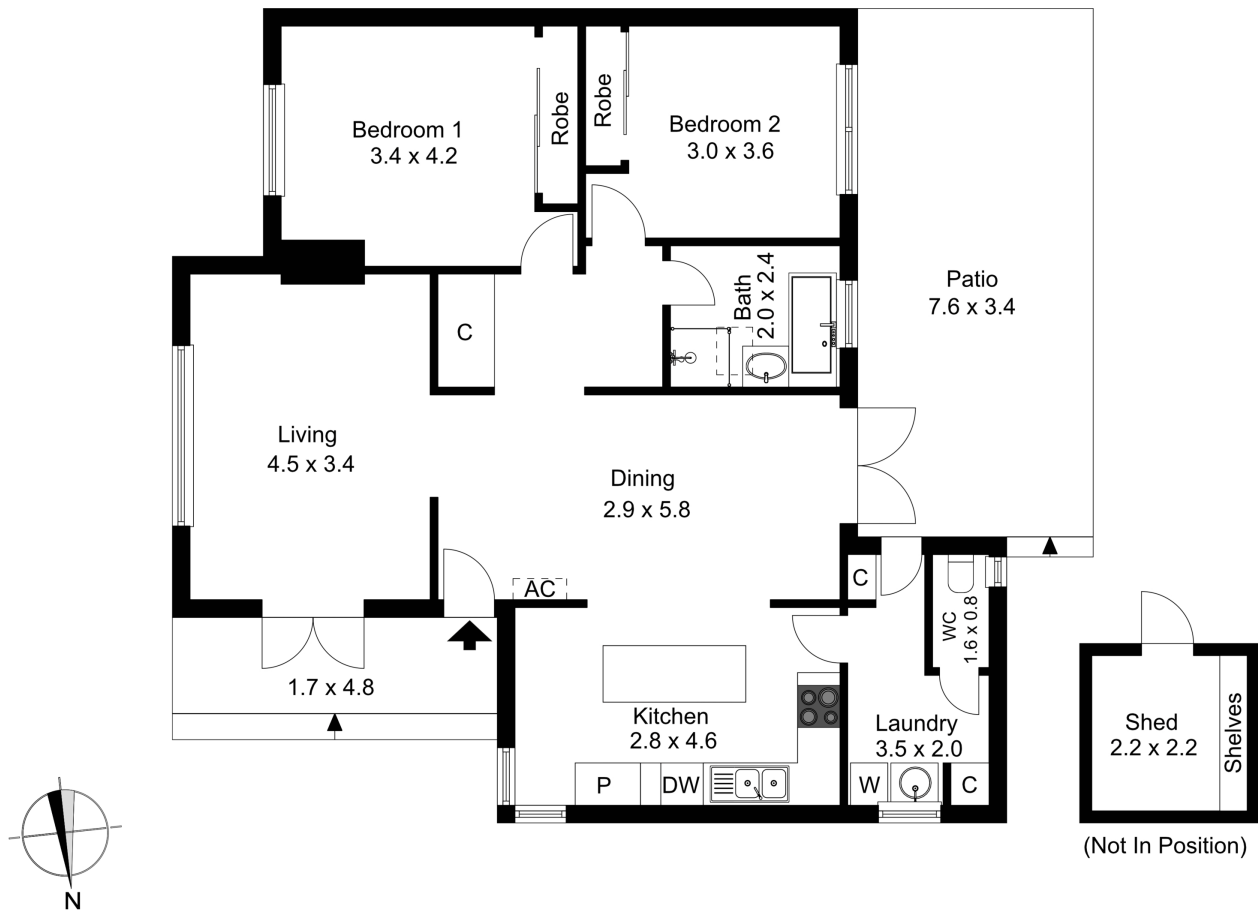
Land Area 355 m2

Agent Details

David Gigliotti - +61411824854

Office Details

Avondale Heights
151 Military Road Avondale
Heights VIC 3034 Australia
03 9337 5066



The floor plan is not to scale; measurements are indicative and in metres. Exterior elements are not in position. Plans should not be relied on. Interested parties should make and rely on their own enquiries.

Produced by **DIAKRIT**