

6B McPherson St, Keilor East



The Ultimate Designer Showpiece!

Situated in one of the most tightly held pockets of Keilor East, this spectacular brand-new residence sets the benchmark in family living with its impressive architecture, world-class features and fabulous indoor/outdoor entertaining spaces.

Uncompromised quality combined with meticulous attention to detail, the home's lavish interior showcases four spacious bedrooms (all with robes and two complemented by WIR's & deluxe master ensuites with terrazzo tiled floors), additional 3rd central bathroom and guest powder room (fourth WC).

Enhancing its family appeal is an on-trend gourmet kitchen finished with natural stone benchtops including Smeg & Bosch appliances, integrated dishwasher and butler's pantry, plus open-plan lounge/dining leading out to an undercover al-fresco entertaining zone with sink, BBQ provision and a stunning Merbau deck.

Complimented by an additional living area upstairs that flaunts high vaulted ceilings and a perfect balcony setting to soak up the views.

4 Beds 3 Baths 1 Cars

Price SOLD for
\$1,192,000

Property Type Residential

Property ID 2358

Agent Details

David Gigliotti - +61411824854

Office Details

Avondale Heights
151 Military Road Avondale
Heights VIC 3034 Australia
03 9337 5066

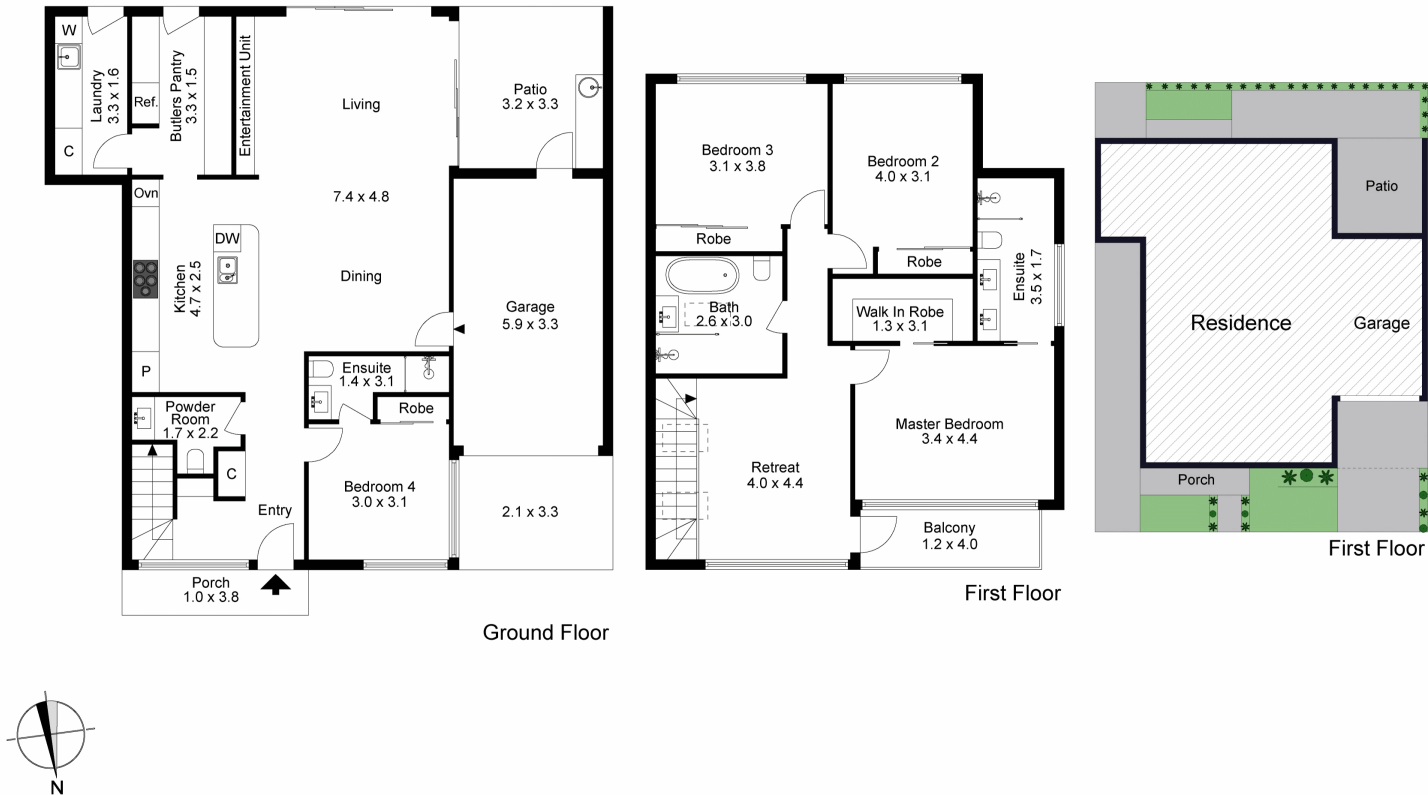
Other highlights of this remarkable home include full refrigerated heating and cooling throughout, premium carpets, Blackbutt flooring, double glazed windows, video intercom, vacuum, alarm system, CCTV cameras, curtains & blinds, fitted robes, electric front gate, full-size laundry, remote-control single garage with epoxy flooring & internal access plus loads more.

One of the finest new builds the area has seen, it is walking distance to Milleara Shopping Centre, local buses, cafes and shopping precincts, a range of sports facilities, renowned primary and secondary schools (PEGS & St Bernards).

Absolute perfection.

DAVID GIGLIOTTI – 0411 824 854

The above information provided has been furnished to us by the vendor/s. We have not verified whether or not that information is accurate and do not have any belief in one way or the other in its accuracy. We do not accept any responsibility to any person for its accuracy and do no more than pass it on. All interested parties should make and rely upon their own inquiries in order to determine whether or not this information is in fact accurate.



The site plan and floor plan are not to scale; measurements are indicative and in metres. Bushes and trees are placed for illustration purposes. Plans should not be relied on. Interested parties should make and rely on their own enquiries.