

Sold



10 Christina Court, Avondale Heights



IMPRESSIVE FAMILY HOME WITH SWEEPING VIEWS!

In a quiet cul-de-sac location and surrounded by established gardens, this immaculately kept brick veneer home provides an exceptional family lifestyle opportunity with its floorplan versatility, abundance of natural light and elevated valley outlook.

Impeccably presented throughout, the home's free-flowing interior comprises five bedrooms (large master with WIR and private ensuite) along with two additional bathrooms - one on each level.

Multiple living zones include an elegant lounge and dining room, huge downstairs rumpus/retreat, as well as a timber-cabinet kitchen with stone benchtops, two ovens, dishwasher and adjoining meals area with sensational views.

Other highlights include balcony, ducted heating and evaporative cooling, gas log fireplace, double glazed windows, oversized laundry, vacuum maid, 3 toilets, single car accommodation, decked rear entertainment area and much more.

5 Beds 3 Baths 1 Cars

Price SOLD for
\$940,000

Property Type Residential

Property ID 2287

Agent Details

David Gigliotti - +61411824854

Office Details

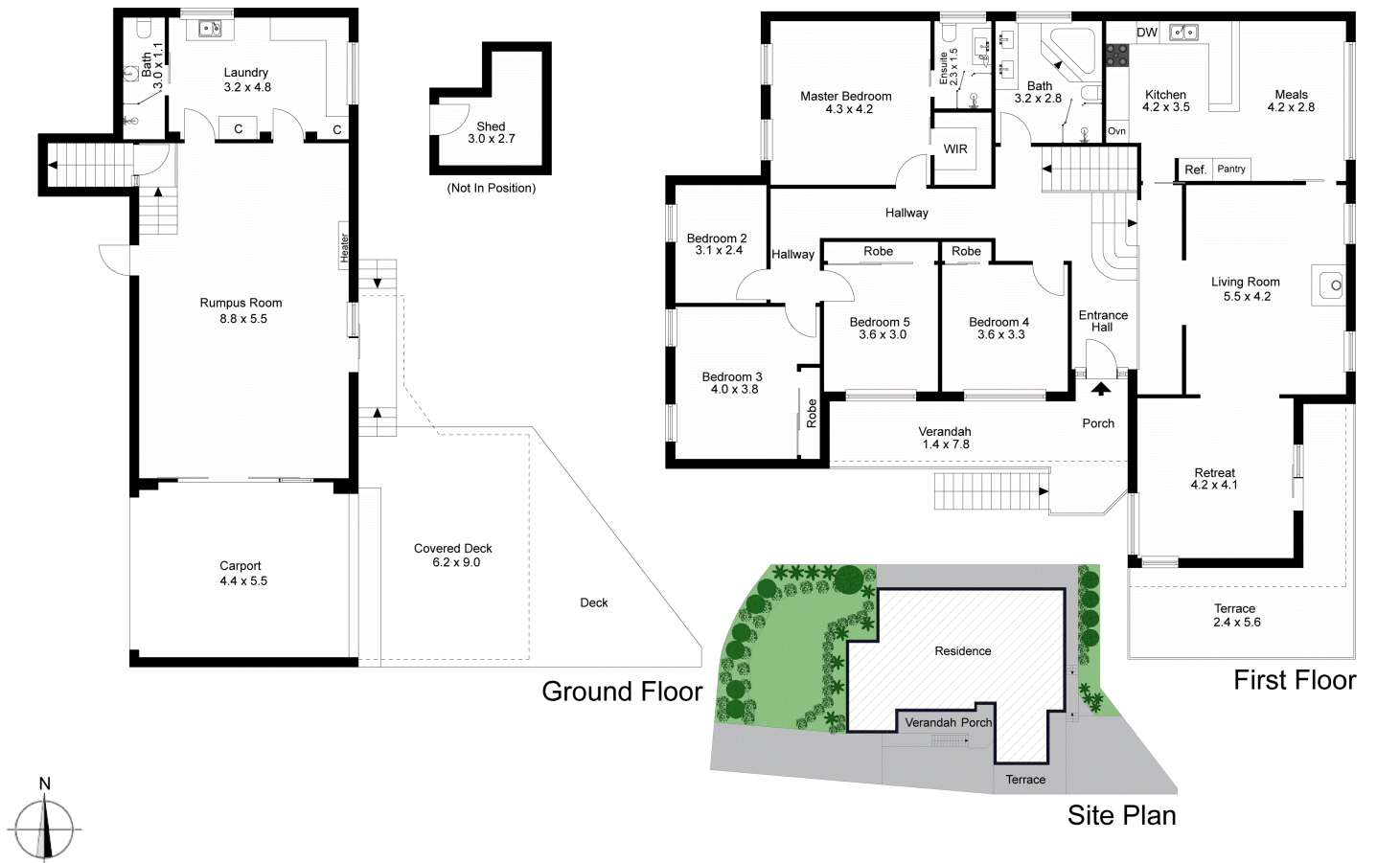
Avondale Heights
151 Military Road Avondale
Heights VIC 3034 Australia
03 9337 5066

Grimes Flat parkland and endless river trails at the end of the street, it also offers easy access to local shops and cafes, public transport options, popular schools both public and private as well as Highpoint Shopping Centre.

DANIEL MEZO - 0433 024 924

DAVID GIGLIOTTI - 0411 824 854

The above information provided has been furnished to us by the vendor/s. We have not verified whether or not that information is accurate and do not have any belief in one way or the other in its accuracy. We do not accept any responsibility to any person for its accuracy and do no more than pass it on. All interested parties should make and rely upon their own inquiries in order to determine whether or not this information is in fact accurate.



The site plan and floor plan are not to scale; measurements are indicative and in metres. Bushes and trees are placed for illustration purposes. Plans should not be relied on. Interested parties should make and rely on their own enquiries.

Produced by **DIAKRIT**