

Sold



107 Riviera Road, Avondale Heights



Impressive Family Home With Stunning City Views!

This beautiful family home is set in the established location of St Bernard's Estate surrounded by gently sloping parklands and breathtaking views of Melbourne's skyline.

Listed for the first time, this exceptional family home is waiting for you to move in with a versatile two-level floorplan and it's open entertaining areas. The home comprises of five extra large bedrooms all with built-in robes including master bedroom with deluxe spa en-suite and WIR, family bathroom and an additional guest toilet downstairs.

Catering for the largest of families, this open plan layout showcases an array of multiple living areas that include a huge formal entry, formal lounge and dining room, an additional casual lounge room and open-plan kitchen overlooking the delightful rear yard.

Upstairs comprises of a spacious family retreat with spectacular city views. Highlighted features include a steel frame construction, gas-ducted heating and evaporative cooling, floorboards, large laundry, 3 toilets, double garage with drive through access to rear yard, alarm,

5 Beds 2 Baths 651 m2

Price SOLD for
\$1,171,888

Property Type Residential

Property ID 2211

Land Area 651 m2

Agent Details

David Gigliotti - +61411824854

Office Details

Avondale Heights
151 Military Road Avondale
Heights VIC 3034 Australia
03 9337 5066

ample storage and much more.

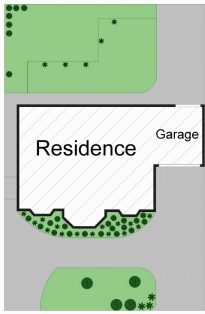
This well-cared one owner home is close to Buckley Street buses, Essendon Station, reputable schools, Shopping Centres and easy freeway access and is ready to welcome you.

DAVID GIGLIOTTI - 0411 824 854

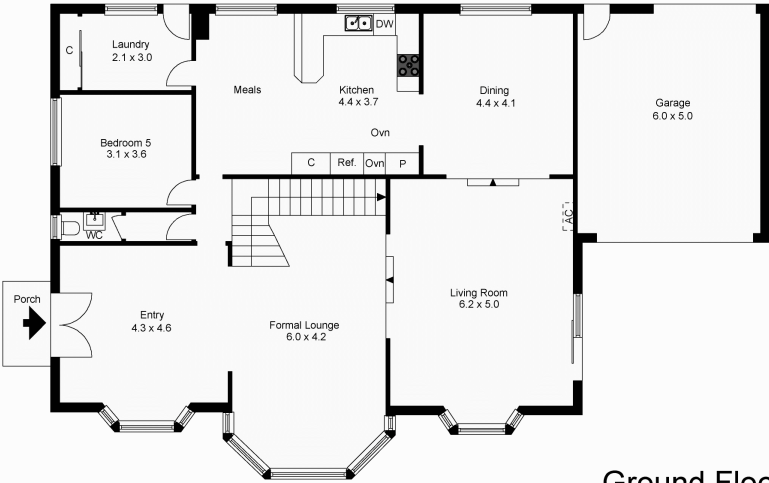
*** COVID-19 Announcement ***

If you're attending an inspection, we request that you only attend if you are fit and healthy to do so and not under any self-isolation conditions. We request that you maintain a healthy distance from anyone attending the inspection, including other prospective buyers and our team members, and if requested wait outside so as to reduce the number of people in the property at any one time. Lastly, please refrain from touching items/fixtures and doors within the properties. If you would like to view something in particular, please request the agent's assistance.

The above information provided has been furnished to us by the vendor/s. We have not verified whether or not that information is accurate and do not have any belief in one way or the other in its accuracy. We do not accept any responsibility to any person for its accuracy and do no more than pass it on. All interested parties should make and rely upon their own inquiries in order to determine whether or not this information is in fact accurate.



Site Plan



Ground Floor



1st Floor



The floor plan is not to scale; measurements are indicative and in metres. Exterior elements are not in position. Plans should not be relied on. Interested parties should make and rely on their own enquiries.

Produced by **DIAKRIT**