



1, 53 Nimmo Street, Essendon



## Sensational Designer Lifestyle!

A sophisticated fusion of luxury and versatility, this stunning residence presents a fully-optional family environment with its expansive floorplan, top-quality features and exclusive Essendon location.

Deluxe interior showcases four large upstairs bedrooms (all with fully-fitted robes & 3 with WIR), superb master ensuite and main family bathroom, central retreat/lounge area.

Downstairs: study/home office (or 5<sup>th</sup> bedroom), third bathroom, 4 toilets, gourmet stone-top kitchen with soft-close drawers, Smeg appliances and fabulous butler's pantry, big open-plan living/dining area, bi-folds to sensational al-fresco entertaining deck complete with kitchen servery, second deck and private rear garden.

Other luxuries include zoned ducted heating/refrigerated cooling, alarm and video intercom, Bluegum floorboards, data/entertainment cabling throughout, plus a family-sized laundry and garage (remote-controlled) with internal entry.

Modern perfection in a prime position with Buckley Park College across

5 Beds 3 Baths 1 Cars

346 m2

### Price

SOLD for  
\$1,375,000

### Property Type

Residential

**Property ID** 2128

**Land Area** 346 m2

### Agent Details

David Gigliotti - +61411824854

### Office Details

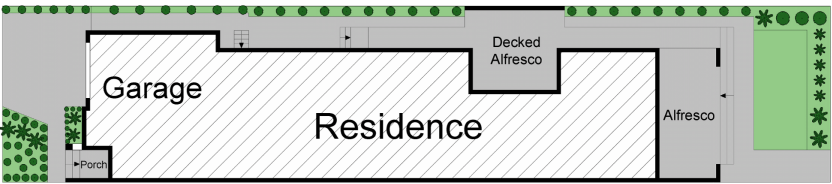
Avondale Heights  
151 Military Road Avondale  
Heights VIC 3034 Australia  
03 9337 5066

the street, nearby to several prestigious private schools, close to IGA shops and restaurants, freeway access & Bus stop within 50 meters walk.

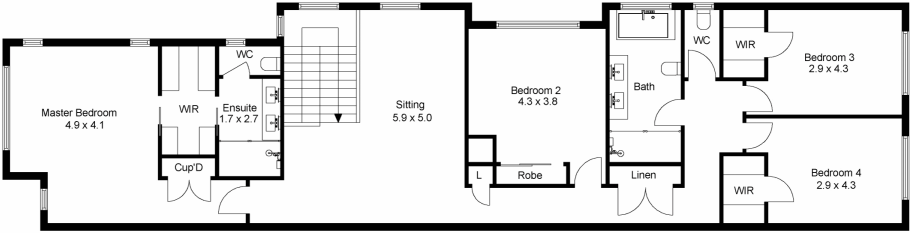
Land size – 346sqm approx

DAVID GIGLIOTTI – 0411 824 854

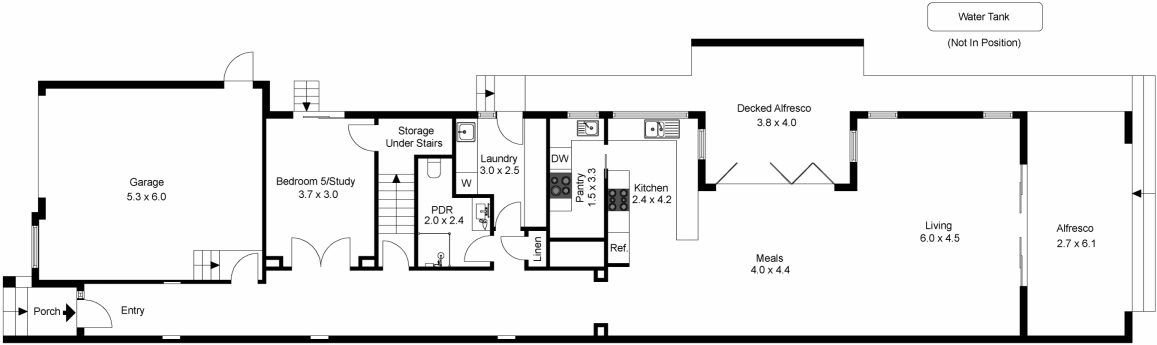
The above information provided has been furnished to us by the vendor/s. We have not verified whether or not that information is accurate and do not have any belief in one way or the other in its accuracy. We do not accept any responsibility to any person for its accuracy and do no more than pass it on. All interested parties should make and rely upon their own inquiries in order to determine whether or not this information is in fact accurate.



Site Plan



First Floor



Ground Floor

The site plan and floor plan are not to scale; measurements are indicative and in metres. Bushes and trees are placed for illustration purposes. Plans should not be relied on. Interested parties should make and rely on their own enquiries.

Produced by DIAKRIT