

Sold



14 The Regency, Hillside



## Timeless Elegance With Entertainer's Appeal!

A Classic Masterpiece to satisfy the discerning buyer that will cater for an idyllic lifestyle that your family deserves!

Located in the coveted 'Regency Rise' estate and sitting on a superb 1000m2 block of land within walking distance to all amenities, this quality-built Grandville Homes has it all.

With 4 fitted bedrooms (master with full spa ensuite & WIR), large study/5th bedroom, glorious entrance to the formal lounge & dining room with open fireplace and bay windows. Stunning granite bench top kitchen with quality appliances and large family sized meals area, central main spa bathroom, additional rear rumpus room and an unbelievable undercover outdoor entertaining area overlooking the landscaped gardens and solar heated inground pool, perfect for year-round entertaining.

Complimenting this outstanding home is a sizable 2 car garage via wide driveway with automated front gates, landscaped gardens both front to back, large rear shed and extensive paving

5 Beds 2 Baths 2 Cars  
1,000 m2

<b>Price</b>	SOLD
<b>Property Type</b>	Residential
<b>Property ID</b>	1993
<b>Land Area</b>	1,000 m2

### Agent Details

David Gigliotti - +61411824854

### Office Details

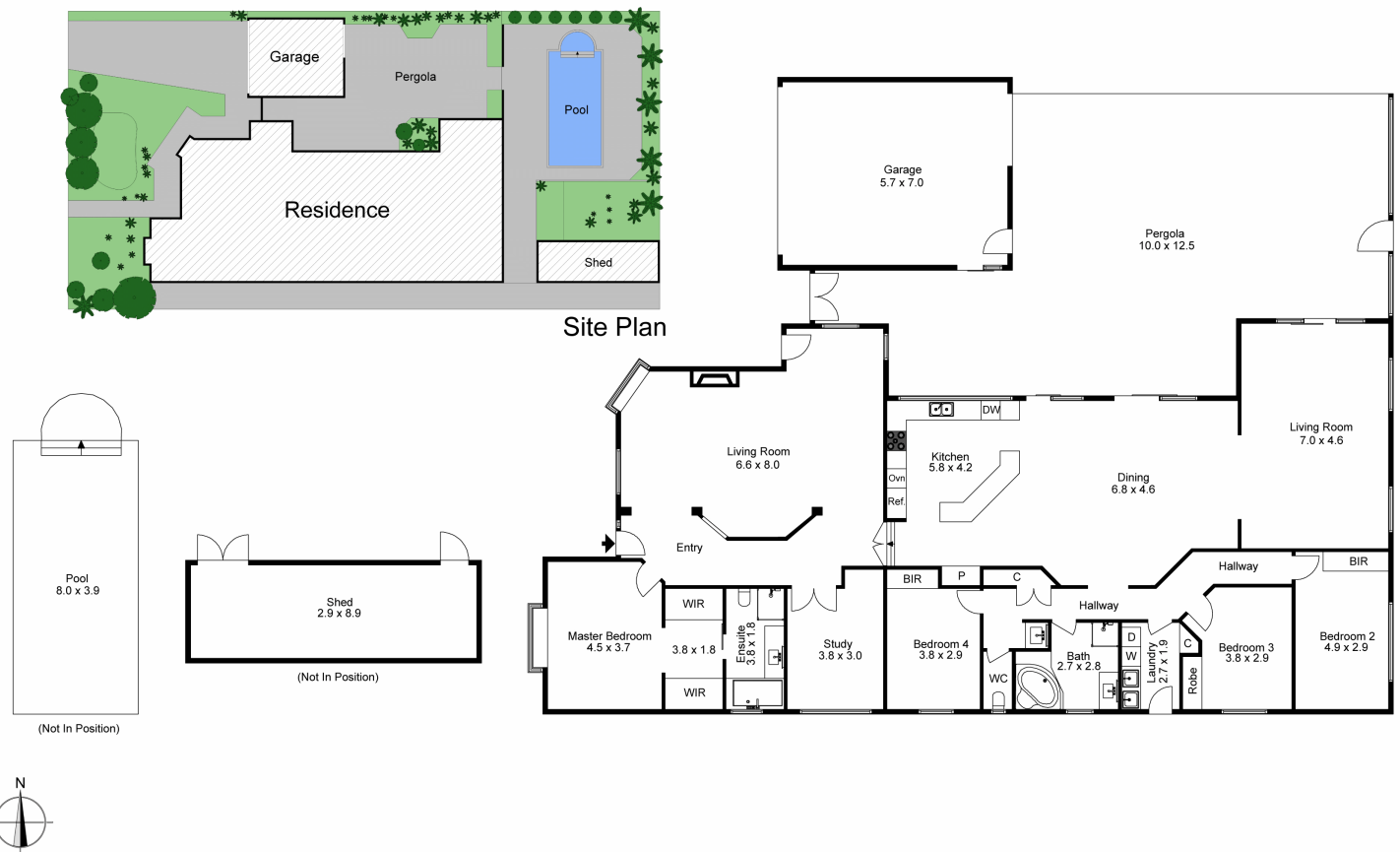
Avondale Heights  
151 Military Road Avondale  
Heights VIC 3034 Australia  
03 9337 5066

Other features include: 10 ft ceilings, electric roller shutters, gas ducted Heating, Evaporative Cooling, Ceiling Fans, Intercom, Alarm System, Ducted Vacuum and so much more.

Inspection is sure to impress!

DAVID GIGLIOTTI – 0411 824 854

The above information provided has been furnished to us by the vendor/s. We have not verified whether or not that information is accurate and do not have any belief in one way or the other in its accuracy. We do not accept any responsibility to any person for its accuracy and do no more than pass it on. All interested parties should make and rely upon their own inquiries in order to determine whether or not this information is in fact accurate.



The site plan and floor plan are not to scale; measurements are indicative and in metres. Bushes and trees are placed for illustration purposes. Plans should not be relied on. Interested parties should make and rely on their own enquiries.

Produced by **DIAKRIT**