

Sold



Unit 2, 1 Shane Court, Avondale Heights



Sensational New Style In St Bernard's Estate!

Impressively proportioned and beautifully appointed, this brand-new two-storey residence comes with a versatile floorplan and a full complement of premium inclusions providing an outstanding family lifestyle that's ready to be enjoyed in the prestigious St Bernard's Estate.

Meticulous attention to detail, the home's refined interior showcases four large bedrooms (main with WIR & ensuite), main family bathroom and guest powder room - all with Calacutta stone-top vanities and floor-to-ceiling tiles and an expansive open-plan living/dining area served by a stunning gourmet Calacutta stone-bench kitchen with splashback, Smeg appliances and ample cupboard space.

Along with zoned ducted heating/refrigerated cooling for all-seasons comfort, the home also includes an alarm system and video intercom, high square-set ceilings with efficient LED lighting, large laundry and excellent storage options, on-trend black fittings and soft-close cabinetry throughout, plus a decked al-fresco entertaining area and

4 Beds 2 Baths 2 Cars

Price SOLD for
\$840,000

Property Type Residential

Property ID 1940

Agent Details

David Gigliotti - +61411824854

Office Details

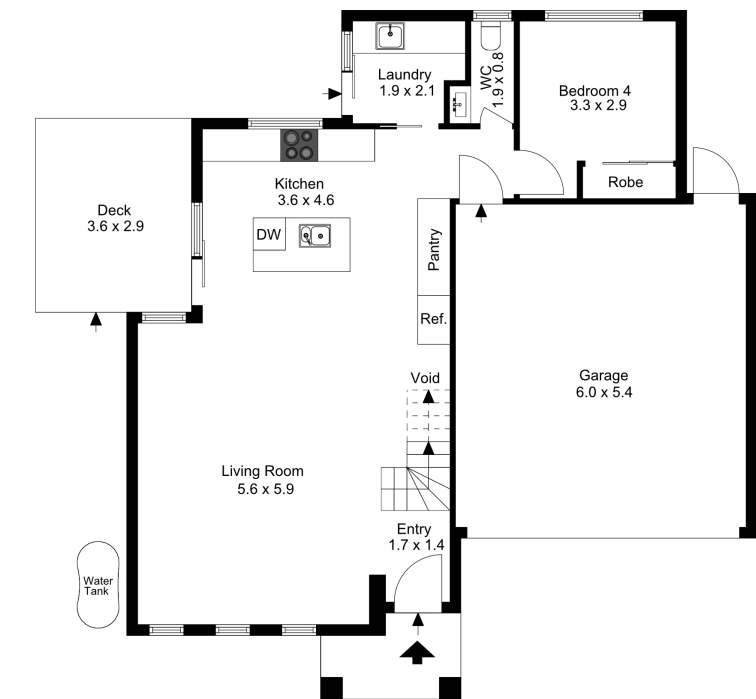
Avondale Heights
151 Military Road Avondale
Heights VIC 3034 Australia
03 9337 5066

courtyard, rare internally-accessed double garage (r/c) and additional driveway parking.

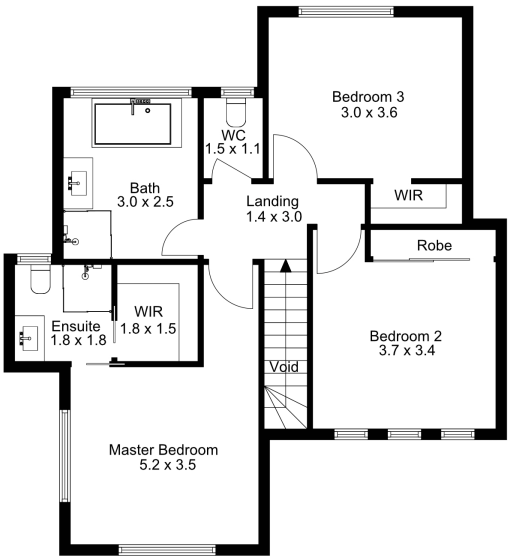
The area's key attractions are all within easy reach including Maribyrnong River & walking trails, shops and cafes, local parks, schools, public transport and Freeway access to CBD.

DAVID GIGLIOTTI – 0411 824 854

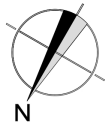
The above information provided has been furnished to us by the vendor/s. We have not verified whether or not that information is accurate and do not have any belief in one way or the other in its accuracy. We do not accept any responsibility to any person for its accuracy and do no more than pass it on. All interested parties should make and rely upon their own inquiries in order to determine whether or not this information is in fact accurate.



Ground Floor



First Floor



The floor plan is not to scale; measurements are indicative and in metres. Exterior elements are not in position. Plans should not be relied on. Interested parties should make and rely on their own enquiries.