

Sold

Unit 6, 22-24 Military Road, Avondale Heights



## PRICED TO SELL! - QUALITY BRAND NEW LIVING IN CENTRAL SURROUNDS!

Tucked quietly away at the rear of the development & designed by renowned BMG architects, you can be the first to enjoy this brand new, quality built and spacious 2 level townhouse equipped with plenty of features and a most central location to match.

Features:

- 3 spacious bedrooms (Master with full ensuite & all with mirrored and fitted BIR)
- Large central bathroom with dual stone topped vanity and double shower
- Terrace balcony access
- Split system heating and cooling
- Large open plan living and dining area with bamboo flooring
- Additional powder room downstairs (3 toilets in total)
- Spacious kitchen with stone benchtops and plenty of cupboard space.

3 Beds 2 Baths 2 Cars

**Price** SOLD for  
\$655,000

**Property Type** Residential

**Property ID** 1849

### Agent Details

David Gigliotti - +61411824854

### Office Details

Avondale Heights  
151 Military Road Avondale  
Heights VIC 3034 Australia  
03 9337 5066

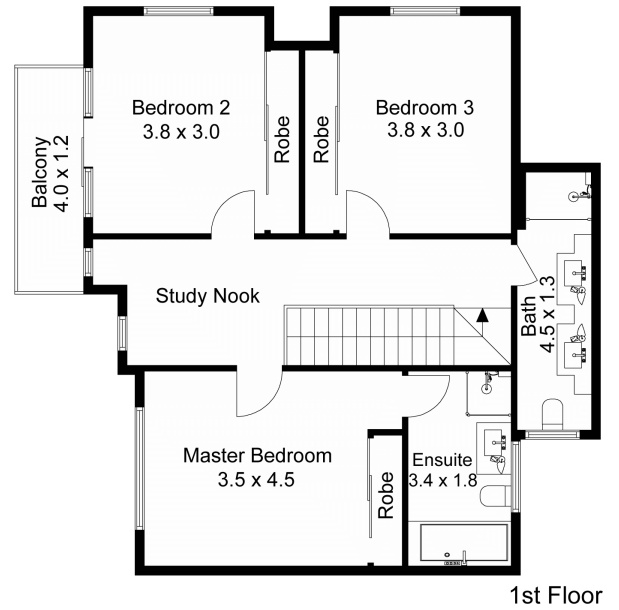
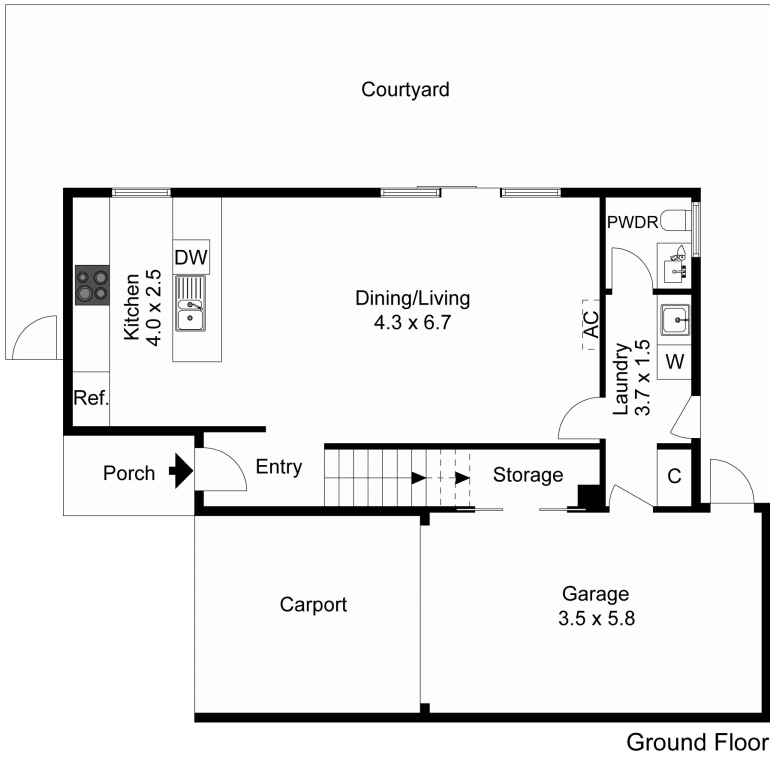
Quality Blanco stainless steel appliances including gas cook top, range hood and dishwasher

- Single under cover carport through to the remote single garage with added storage, also providing internal and rear yard access
- Low maintenance rear yard with landscaped gardens
- Study nook upstairs
- Large laundry
- Walking distance to tram stop
- Walking distance Coles, Post office, cafes, restaurants and Highpoint Shopping Centre
- Great schooling primary and secondary schooling options
- Only 12 km to the CBD
- Close to parklands, walking trails and Maribyrnong River

If you are after brand new, low maintenance & quality built townhouse, be sure to check this one out!

DAVID GIGLIOTTI – 0411 824 854

The above information provided has been furnished to us by the vendor/s. We have not verified whether or not that information is accurate and do not have any belief in one way or the other in its accuracy. We do not accept any responsibility to any person for its accuracy and do no more than pass it on. All interested parties should make and rely upon their own inquiries in order to determine whether or not this information is in fact accurate.



The floor plan is not to scale; measurements are indicative and in metres. Exterior elements are not in position.  
Plans should not be relied on. Interested parties should make and rely on their own enquiries.

Produced by **DIAKRIT**