

Sold



89 San Remo Drive, Avondale Heights



ABSOLUTE LUXURY WITH SELF CONTAINED LIVING DOWNSTAIRS!

A must-see property for those looking for separate parent/teen accommodation or for those with the growing family that require the extra space!

Occupying a huge block (739sqm) and located in one of Avondale Heights most prestigious pockets with reserve and parkland directly to the rear, this outstanding family home ticks all the boxes and comes feature packed with quality finishes at every turn along with gas ducted heating and evaporative cooling.

Main level: Marbled floor entry that leads to 4 large bedrooms, master with W.I.R and majestic spa en-suite, two generous sized living areas, central gleaming bathroom, renovated stone topped kitchen with stainless steel appliances, study nook and sun filled dining areas and balcony access front and rear.

Lower Level: An extra-large garage that can cater for up to 4 cars, adjacent work shop and separate living quarters that offers a huge main bedroom with WIR & ensuite, well equipped kitchen, laundry, and

5 Beds 3 Baths 4 Cars

739 m2

Price

SOLD for
\$1,038,888

Property Type

Residential

Property ID 1842

Land Area 739 m2

Agent Details

David Gigliotti - +61411824854

Office Details

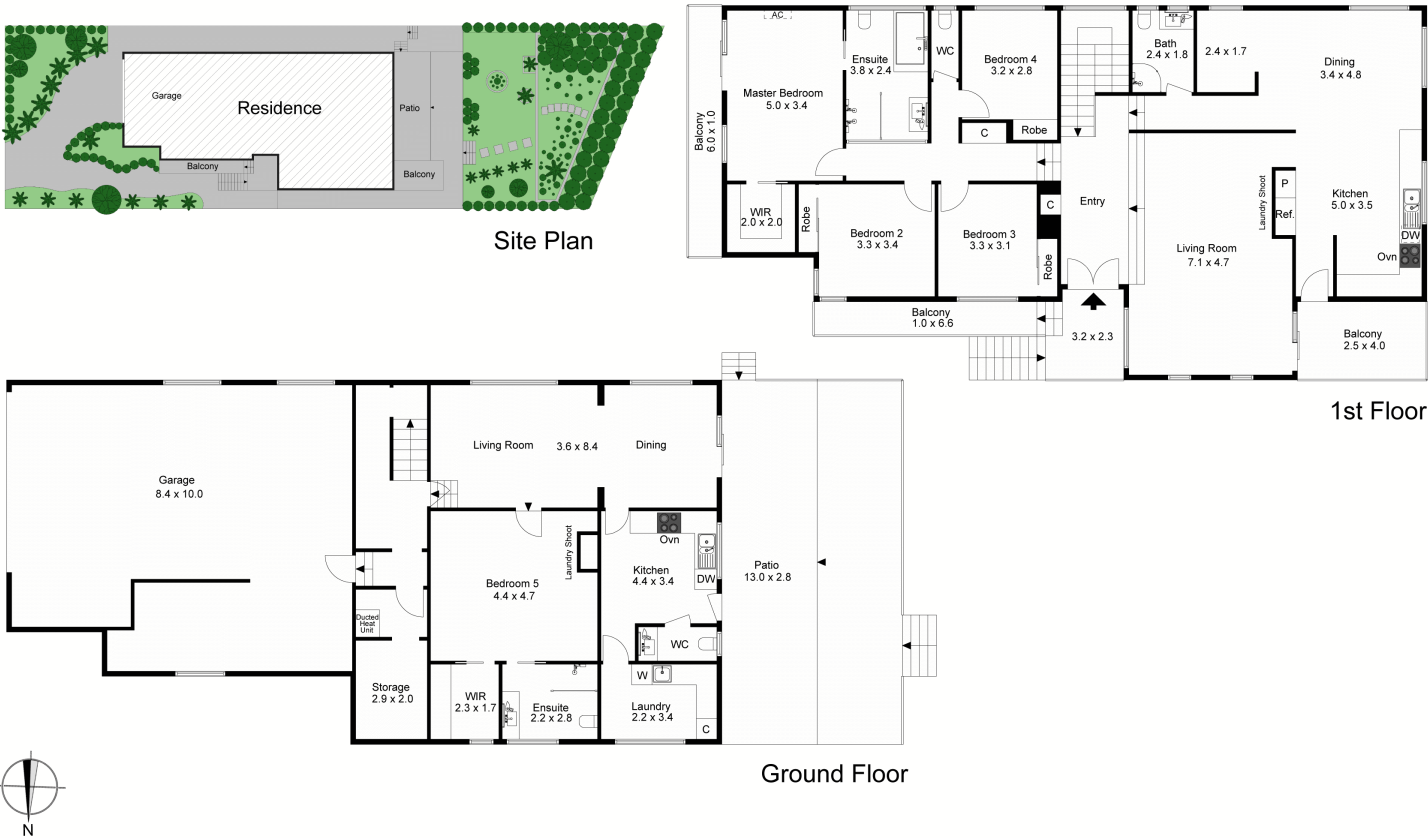
Avondale Heights
151 Military Road Avondale
Heights VIC 3034 Australia
03 9337 5066

spacious lounge and dining rooms that open to a huge undercover
decked alfresco area and surrounded by lush landscaped gardens.

Conveniently located near all local amenities and walking distance to
Buckley Street & Maribyrnong river, this is a quality home in a premium
location that is sure to impress.

DAVID GIGLIOTTI – 0411 824 854

The above information provided has been furnished to us by the vendor/s. We have not verified whether or not
that information is accurate and do not have any belief in one way or the other in its accuracy. We do not
accept any responsibility to any person for its accuracy and do no more than pass it on. All interested parties
should make and rely upon their own inquiries in order to determine whether or not this information is in fact
accurate.



The site plan and floor plan are not to scale; measurements are indicative and in metres. Bushes and trees are placed for illustration purposes.
Plans should not be relied on. Interested parties should make and rely on their own enquiries.

Produced by **DIAKRIT**