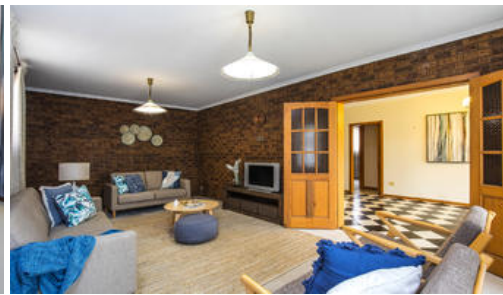




10 Surrey Drive, Keilor East



EXCEPTIONAL FAMILY LIFESTYLE IN BLUE CHIP LOCALE!

A large allotment of land (approx 715sqm) in Keilor East's most exclusive pocket finds this spacious Spanish inspired family home offering a fine mix of quality and versatility within close proximity to a range of lifestyle attractions.

A flexible floorplan comprises of 5 bedrooms (main with ensuite & WIR and 3 with BIR), central bathroom, formal lounge and dining rooms, adjoining dining area with open fireplace and quality timber kitchen with plenty of cupboard space.

Add to this an additional large rumpus/living area, huge laundry with storage cupboards, under-house cellar & storeroom and double r/c garage.

Other features 3 toilets, 3 bathrooms in total, gas ducted heating, balcony plus plenty of north-facing backyard complete with undercover entertaining area and additional off-street parking option.

One of the best addresses in Keilor East, the home is instantly enjoyable with options to further enhance, offering easy access to public transport, fine local schools including Penleigh & Essendon Grammar & St Bernard's, Steele Creek trails and parkland, shopping precincts and freeways to CBD.

DAVID GIGLIOTTI - 0411 824 854

The above information provided has been furnished to us by the vendor/s. We have not verified whether or not that information is accurate and do not have any belief in one way or the other in its accuracy. We do not accept any responsibility to any person for its accuracy and do no more than pass it on. All interested parties should make and rely upon their own inquiries in order to determine whether or not this information is in fact accurate.

5 3 2

Price SOLD for \$1,012,000
Property Type residential
Property ID 1747
Land Area 715 m2

Auction

Saturday 8 December, 12:00 PM

Agent Details

David Gigliotti - +61411824854

Office Details

Avondale Heights
151 Military Road Avondale Heights VIC
3034 Australia
03 9337 5066

MOONEE VALLEY REAL ESTATE